

**SPRINGBORO COMMUNITY CITY SCHOOLS**  
**RECONCILIATION FOR MONTH ENDING**  
**AUGUST 31, 2022**



**Depository Balances:**

5/3 Operating Checking Acct #99903794	\$22,199,233.77	
Total Depository Balances		\$22,199,233.77

**Adjustments to Bank Balance:**

Outstanding Checks: Accounting	-\$363,681.42	
Payroll	-\$40,860.30	
Outstanding Vcards: Accounting	\$26,612.54	
Adjustments/Notes	\$2,790.57	
1) PR Adjustments in Transit	\$ 997.15	
2) Amount to balance to bank	\$ 1,431.81	
3) Federal Taxes in Transit	\$ (30.32)	
4) Ohio Taxes in Transit	\$ (17.49)	
5) SERS in Transit	\$ 409.42	
Total Adjustments to Bank Balance		-\$375,138.61

**Investments:**

CD - Harold E Mills 5/3 Bank (9098)	\$41,846.57	
CD - Merle & Mary Allen 5/3 Bank (9219)	\$56,613.17	
CD - Grange Scholarship 5/3 Bank (9093)	\$21,491.98	
CD - Patricia McCandless 5/3 Bank (9021)	\$460,829.01	
Huntington Bank Acct #1041012893	\$1,048,762.64	
Star Ohio	\$35,578.10	
5/3 Securities	\$5,133,081.25	
Total Investments		\$6,798,202.72

**Total Bank Balances**

**\$28,622,297.88**

**Total Fund Balance**

**\$28,622,297.88**

**\$0.00**

**Arbiter Account:**

Acct #1095061300 Arbiter Balance	\$8,292.42	
Outstanding Payments	\$0.00	
Book Balance		\$8,292.42

**Fifth Third Bank:**

Acct#7703569421		\$11,265.00
-----------------	--	-------------

*Terrah Stacy*  
 Terrah Stacy, Treasurer/CFO

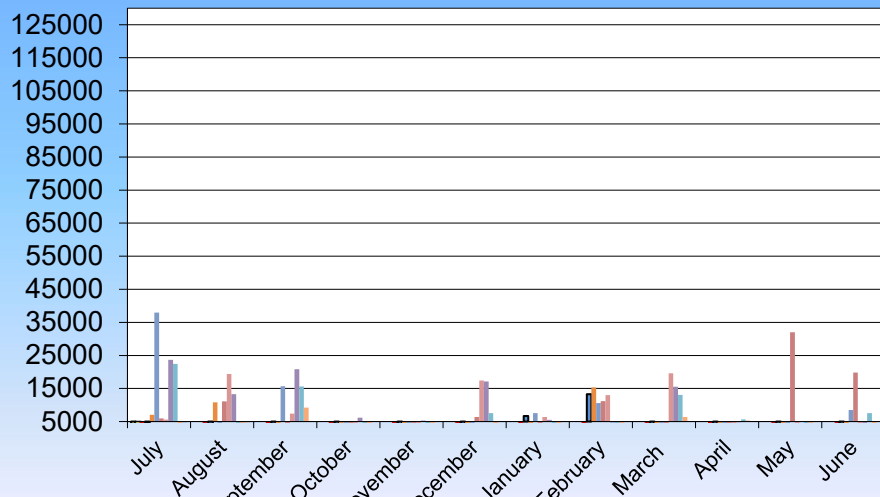


**SPRINGBORO COMMUNITY CITY SCHOOLS**  
**INVESTMENT INCOME HISTORY**

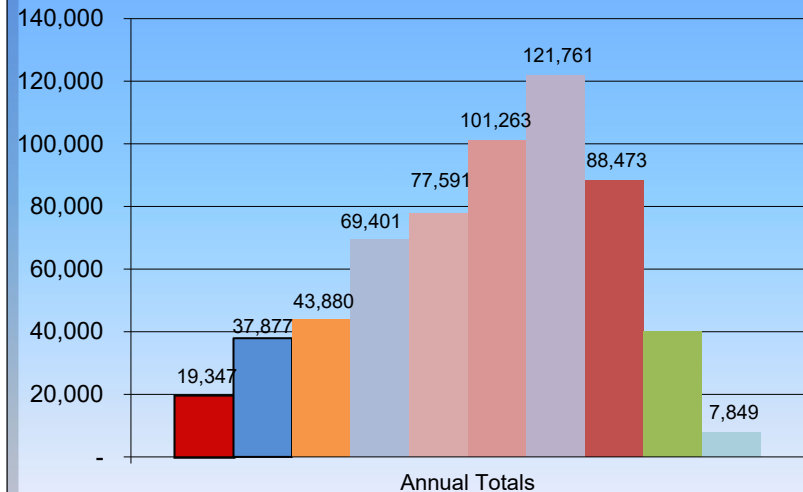
Current Month

	July	August	September	October	November	December	January	February	March	April	May	June	ANNUAL
2014	1221	2279	3249	2495	2490	2687	1129	883	-448	1712	1650	0	19,347
2015	4669	31	1679	3267	2659	1159	6674	13,265	574	1318	2582	0	37,877
2016	7045	10,791	759	1736	3735	1359	1785	15,304	654	685	27	0	43,880
2017	37,964	15	15,685	869	18	(12,835)	7,539	10,587	(4,215)	4,250	1,003	8,521	69,401
2018	5,955	11,125	718	958	-3924	6,360	-2699	11,168	-4284	403	32,017	19,794	77,591
2019	5,558	19,354	7,390	221	3497	17,427	6393	12,983	19,563	4,468	4,409	-	101,263
2020	23,662	13,260	20,849	6,183	5,303	17,090	5531	4,729	15,530	4,754	4,870	-	121,761
2021	22,446	2,749	15,606	2,268	4,312	7,532	2219	952	13,037	5,660	4,174	7,518	88,473
2022	2,097	2,102	9,222	4,457	3,291	1,002	1,419	1,349	6,404	5,316	3,364	-	40,023
2023	3,181	4,668											7,849

**INVESTMENT INCOME MONTHLY HISTORY**



**INVESTMENT INCOME ANNUAL HISTORY**



sex No. Dec. F.

■ 2014 ■ 2015 ■ 2016 ■ 2017 ■ 2018 ■ 2019 ■ 2020 ■ 2021 ■ 2022 ■ 2023

■ 2014 ■ 2015 ■ 2016  
■ 2017 ■ 2018 ■ 2019

## SPRINGBORO COMMUNITY SCHOOLS

### Cash Summary Report

Full Account Code	Description	Initial Cash	MTD Received	FYTD Received	MTD Expended	FYTD Expended	Fund Balance	Encumbrance	Unencumbered Balance
001-0000	GENERAL	\$ 11,123,935.91	\$ 8,706,700.42	\$ 17,758,149.75	\$ 4,750,917.54	\$ 10,198,317.04	\$ 18,683,768.62	\$ 4,318,766.31	\$ 14,365,002.31
001-9412	BUDGET RESERVE	1,013,208.92	0.00	0.00	0.00	0.00	1,013,208.92	0.00	1,013,208.92
002-0000	BOND RETIREMENT	6,560,786.04	0.00	0.00	0.00	0.00	6,560,786.04	0.00	6,560,786.04
002-9204	MASTER FACILITY PLAN-BOND RETIREMENT	0.00	0.00	0.00	0.00	0.00	0.00	0.00	0.00
003-0000	PERMANENT IMPROVEMENT	702,728.93	450,000.00	970,000.00	297,029.72	1,735,811.21	(63,082.28)	556,317.47	(619,399.75)
003-9223	PERMANENT IMPROVEMENT	0.00	0.00	0.00	0.00	0.00	0.00	0.00	0.00
004-9018	Track & Turf Project FY18	769.35	0.00	0.00	0.00	0.00	769.35	0.00	769.35
004-9218	MIRACLE FIELD PROJECT	28,220.00	0.00	0.00	0.00	0.00	28,220.00	0.00	28,220.00
006-0000	FOOD SERVICE FUND	1,849,066.19	141,681.41	142,696.21	150,077.35	271,858.11	1,719,904.29	215,870.20	1,504,034.09
007-9001	PEPSI SCHOLARSHIP	8,000.00	0.00	0.00	0.00	0.00	8,000.00	0.00	8,000.00
007-9002	SHS MEMORIAL TRUST FUND	2,699.06	0.00	0.00	0.00	0.00	2,699.06	0.00	2,699.06
007-9003	ERIKA OWEN SCHOLARSHIP FUND	0.00	0.00	0.00	0.00	0.00	0.00	0.00	0.00
007-9004	SHAPIRO MEMORIAL SCHOLARSHIP FUND	500.00	0.00	0.00	0.00	0.00	500.00	0.00	500.00
007-9021	Patricia McCandless HS Scholarship Fund	460,266.36	194.97	562.65	0.00	0.00	460,829.01	0.00	460,829.01
007-9093	GRANGE SCHOLARSHIP FUND	21,436.23	26.98	55.75	0.00	0.00	21,491.98	0.00	21,491.98
007-9098	HAROLD E. MILLS SCHOLARSHIP FUND	41,738.40	52.53	108.17	0.00	0.00	41,846.57	0.00	41,846.57
007-9214	WADE SCHOLARSHIP	2,950.00	0.00	0.00	0.00	0.00	2,950.00	0.00	2,950.00
007-9219	Merle & Mary Allen Scholarhsip Fund	56,466.82	71.07	146.35	0.00	0.00	56,613.17	0.00	56,613.17
007-9220	Wayne Kemper Scholarship Fund	13,003.00	0.00	3,000.00	0.00	0.00	16,003.00	0.00	16,003.00
007-9221	Harris & South Families Scholarship Fund	600.00	0.00	0.00	0.00	0.00	600.00	0.00	600.00
018-904A	HIGH SCHOOL PUBLIC SCHOOL SUPPORT FUND	48,054.55	0.00	41.97	1,815.38	2,115.38	45,981.14	1,876.60	44,104.54
018-905A	JR HIGH PUBLIC SCHOOL SUPPORT FUND	33,790.46	0.00	18.65	1,284.56	1,903.12	31,905.99	361.22	31,544.77
018-906A	SPRINGBORO INTERMEDIATE PUBLIC SCHOOL SUPPORT	7,169.98	192.00	208.03	62.70	62.70	7,315.31	237.30	7,078.01
018-907A	CLEARCREEK ELEMENTARY PUBLIC SCHOOL SUPPORT	48,363.26	0.00	41.46	2,169.67	2,169.67	46,235.05	1,811.34	44,423.71
018-915A	DENNIS ELEM EAST - PUBLIC SCHOOL SUPPORT FUND	34,160.63	4,950.00	4,989.20	864.35	864.35	38,285.48	3,102.28	35,183.20
018-918A	FIVE POINTS WEST - PUBLIC SCHOOL SUPPORT FUND	138,363.09	7,081.38	7,140.38	1,116.41	1,116.41	144,387.06	6,580.18	137,806.88
018-960A	Superintendent/District Support	14,884.19	0.00	0.00	1,330.00	1,330.00	13,554.19	70.00	13,484.19
018-970A	SUPP SERV/TRANS PUBLIC SCHOOL SUPPORT FUND	1,900.60	0.00	35.26	78.86	514.86	1,421.00	585.14	835.86
018-980A	CURRICULUM - PUBLIC SCHOOL SUPPORT FUND	34,338.12	0.00	0.00	(880.00)	3,365.00	30,973.12	0.00	30,973.12
019-9220	Warren Cty Board of MRDD Grant FY20	0.00	0.00	0.00	0.00	0.00	0.00	0.00	0.00

## SPRINGBORO COMMUNITY SCHOOLS

## Cash Summary Report

Full Account Code	Description	Initial Cash	MTD Received	FYTD Received	MTD Expended	FYTD Expended	Fund Balance	Encumbrance	Unencumbered Balance
019-9221	WCBDD Grant FY21	\$ 0.00	\$ 0.00	\$ 0.00	\$ 0.00	\$ 0.00	\$ 0.00	\$ 0.00	\$ 0.00
019-9222	WCBDD Grant FY22	0.00	0.00	0.00	0.00	0.00	0.00	0.00	0.00
019-9223	WCBDD Grant FY22	0.00	0.00	0.00	8,877.09	8,877.09	(8,877.09)	41,122.91	(50,000.00)
019-924K	FY14 KINDER MORGAN GRANT	0.00	0.00	0.00	0.00	0.00	0.00	0.00	0.00
020-0000	MVH LEASE	0.00	0.00	0.00	0.00	0.00	0.00	0.00	0.00
	PAYMENTS/SPECIAL								
	ENTERPRISE FUND								
024-9202	FLEXIBLE SPENDING	9,091.77	0.00	0.00	0.00	0.00	9,091.77	0.00	9,091.77
200-901A	HIGH SCHOOL PRIDE	1,194.68	0.00	0.00	0.00	0.00	1,194.68	0.00	1,194.68
	COMMITTEE								
200-902A	ROBOTICS CLUB - DISTRICT	24,171.42	186.80	1,186.80	474.42	1,303.59	24,054.63	3,870.65	20,183.98
	WIDE								
200-903A	STAND CLUB	403.44	0.00	0.00	0.00	0.00	403.44	0.00	403.44
200-904A	Radio Broadcasting Club	200.00	0.00	0.00	0.00	0.00	200.00	0.00	200.00
200-905A	SKI CLUB	10,772.18	0.00	0.00	0.00	0.00	10,772.18	0.00	10,772.18
200-906A	HS CAR CLUB	412.78	0.00	0.00	0.00	0.00	412.78	0.00	412.78
200-907A	BPA Club (Business) HS	228.00	0.00	0.00	0.00	0.00	228.00	0.00	228.00
200-908A	JROTC	3,839.04	11,104.94	11,104.94	0.00	0.00	14,943.98	11,704.94	3,239.04
200-909A	HIGH SCHOOL GERMAN CLUB	108.38	0.00	0.00	0.00	0.00	108.38	0.00	108.38
200-910A	HS Academic Team	0.00	0.00	0.00	0.00	0.00	0.00	0.00	0.00
200-911A	SI - STUDENT COUNCIL	1,128.15	0.00	0.00	0.00	0.00	1,128.15	0.00	1,128.15
200-912A	HS ART CLUB	35.29	20.00	20.00	0.00	0.00	55.29	0.00	55.29
200-913A	HIGH SCHOOL DRAMA CLUB	5,123.80	0.00	0.00	0.00	0.00	5,123.80	0.00	5,123.80
200-914A	JCOWA (FORMERLY GLOBAL	614.94	0.00	0.00	0.00	0.00	614.94	0.00	614.94
	CONNECTIONS)								
200-915A	S.A.D.D.	2,739.72	0.00	0.00	0.00	0.00	2,739.72	0.00	2,739.72
200-916A	HS LANGUAGE CLUB	3,090.20	0.00	0.00	0.00	0.00	3,090.20	0.00	3,090.20
200-917A	HIGH SCHOOL STUDENT	33,254.70	0.00	0.00	5,764.74	6,144.85	27,109.85	16,805.15	10,304.70
	COUNCIL								
200-918A	JR HIGH STUDENT COUNCIL	1,057.08	0.00	0.00	0.00	0.00	1,057.08	0.00	1,057.08
200-919A	S-CAPADES	16,175.09	2,695.00	2,695.00	0.00	0.00	18,870.09	0.00	18,870.09
200-920A	JR HIGH YEARBOOK	17,404.07	70.00	70.00	0.00	0.00	17,474.07	0.00	17,474.07
200-921A	DENNIS LIFE SKILLS	0.00	0.00	0.00	0.00	0.00	0.00	0.00	0.00
200-922A	HS JOB AND LIFE SKILLS	621.72	96.00	96.00	0.00	0.00	717.72	300.00	417.72
200-923A	FP LIFE SKILLS	0.00	0.00	0.00	0.00	0.00	0.00	0.00	0.00
200-924A	SI Theater Club	5,329.15	0.00	0.00	0.00	0.00	5,329.15	0.00	5,329.15
200-925A	HIGH SCHOOL NEWSPAPER	1.11	0.00	0.00	0.00	0.00	1.11	0.00	1.11
200-926A	JR HIGH NEWSPAPER	86.12	0.00	0.00	0.00	0.00	86.12	0.00	86.12
200-927A	HS NHS	243.45	0.00	0.00	0.00	385.00	(141.55)	0.00	(141.55)
200-928A	S.A.D.D. - JUNIOR HIGH	352.99	0.00	0.00	0.00	0.00	352.99	0.00	352.99
200-929A	THE MUSE MACHINE	2,375.60	1,074.00	1,074.00	540.00	540.00	2,909.60	2,200.00	709.60
200-930A	HS Fishing Club	1,725.13	0.00	0.00	0.00	0.00	1,725.13	0.00	1,725.13
200-931A	JH JOB AND LIFE SKILLS	919.08	0.00	0.00	0.00	0.00	919.08	0.00	919.08

## SPRINGBORO COMMUNITY SCHOOLS

### Cash Summary Report

Full Account Code	Description	Initial Cash	MTD Received	FYTD Received	MTD Expended	FYTD Expended	Fund Balance	Encumbrance	Unencumbered Balance
200-9323	Mindfulness Club	\$ 140.00	\$ 0.00	\$ 0.00	\$ 0.00	\$ 0.00	\$ 140.00	\$ 0.00	\$ 140.00
200-932A	SHS DEBATE CLUB	0.00	0.00	0.00	0.00	0.00	0.00	0.00	0.00
200-933A	SPRINGBORO CHAPTER OF HOSA	0.00	0.00	0.00	0.00	0.00	0.00	0.00	0.00
200-950A	HS TECH PREP	5.00	0.00	0.00	0.00	0.00	5.00	0.00	5.00
200-954A	JR STATESMEN OF AMERICA	40.00	0.00	0.00	0.00	0.00	40.00	0.00	40.00
200-956A	JH NHS	910.14	0.00	0.00	0.00	0.00	910.14	0.00	910.14
200-960A	HIGH SCHOOL PANTHER EXPRESS	39,889.15	0.00	0.00	0.00	0.00	39,889.15	0.00	39,889.15
200-965A	HS SCIENCE & ENGINEERING CLUB	8.56	0.00	0.00	0.00	0.00	8.56	0.00	8.56
200-972A	CLASS OF 2020	0.00	0.00	0.00	0.00	0.00	0.00	0.00	0.00
200-973A	CLASS OF 2021	0.00	0.00	0.00	0.00	0.00	0.00	0.00	0.00
200-974A	CLASS OF 2022	1,933.00	0.00	0.00	0.00	1,933.00	0.00	0.00	0.00
200-975A	CLASS OF 2023	2,876.76	2,520.00	4,453.00	0.00	0.00	7,329.76	0.00	7,329.76
200-976A	CLASS OF 2024	0.00	0.00	0.00	0.00	0.00	0.00	0.00	0.00
200-977A	CLASS OF 2025	0.00	0.00	0.00	0.00	0.00	0.00	0.00	0.00
300-9011	SWIMMING FUNDRAISER ACCT.	1,137.29	0.00	0.00	0.00	0.00	1,137.29	0.00	1,137.29
300-9017	HS GIRLS TRACK - FUNDRAISER	261.81	0.00	0.00	0.00	0.00	261.81	0.00	261.81
300-9018	JH GIRLS TRACK - FUNDRAISER	1,217.01	0.00	0.00	0.00	0.00	1,217.01	0.00	1,217.01
300-901B	ATHLETICS	137,602.27	65,184.44	70,462.44	36,671.60	76,900.02	131,164.69	40,122.24	91,042.45
300-901C	HS BOYS BASKETBALL FUNDRAISER ACCT.	5,517.16	0.00	0.00	0.00	0.00	5,517.16	0.00	5,517.16
300-901D	JH BOYS BASKETBALL FUNDRAISER ACCT.	93.00	0.00	0.00	0.00	0.00	93.00	0.00	93.00
300-901E	BOYS SOCCER FUNDRAISER ACCT.	30,674.68	0.00	0.00	787.74	4,823.73	25,850.95	1,818.49	24,032.46
300-901F	SOFTBALL FUNDRAISER ACCT.	4,905.35	0.00	0.00	0.00	0.00	4,905.35	1,100.00	3,805.35
300-901G	BASEBALL FUNDRAISER ACCT.	25,458.11	0.00	0.00	0.00	0.00	25,458.11	165.00	25,293.11
300-901H	HS FOOTBALL FUNDRAISER ACCT.	10,459.59	0.00	0.00	0.00	99.33	10,360.26	0.00	10,360.26
300-901I	JH FOOTBALL FUNDRAISER	3,806.00	0.00	0.00	0.00	0.00	3,806.00	0.00	3,806.00
300-901J	BOWLING FUNDRAISER ACCT.	2,292.62	0.00	0.00	0.00	0.00	2,292.62	0.00	2,292.62
300-901K	BOYS GOLF FUNDRAISER ACCT.	7,861.08	0.00	0.00	978.09	2,803.09	5,057.99	2,500.00	2,557.99
300-901L	GIRLS GOLF FUNDRAISER ACCT.	5,127.32	0.00	0.00	451.54	1,857.67	3,269.65	251.00	3,018.65
300-901M	HS BOYS TRACK FUNDRAISER ACCT.	1,983.65	0.00	0.00	0.00	53.36	1,930.29	0.00	1,930.29
300-901N	JH BOYS TRACK FUNDRAISER ACCT.	0.00	0.00	0.00	0.00	0.00	0.00	0.00	0.00
300-901O	HS WRESTLING FUNDRAISER ACCT.	644.49	0.00	0.00	0.00	0.00	644.49	0.00	644.49
300-901P	JH WRESTLING FUNDRAISER ACCT.	426.28	0.00	0.00	0.00	0.00	426.28	0.00	426.28
300-901Q	HS GIRLS BASKETBALL	3,873.27	0.00	0.00	486.00	486.00	3,387.27	900.00	2,487.27

## SPRINGBORO COMMUNITY SCHOOLS

### Cash Summary Report

Full Account Code	Description	Initial Cash	MTD Received	FYTD Received	MTD Expended	FYTD Expended	Fund Balance	Encumbrance	Unencumbered Balance
300-901R	FUNDRAISER ACCT. JH GIRLS BASKETBALL FUNDRAISER ACCT.	\$ 160.00	\$ 0.00	\$ 0.00	\$ 0.00	\$ 0.00	\$ 160.00	\$ 0.00	\$ 160.00
300-901S	GIRLS SOCCER FUNDRAISER ACCT.	19,918.65	0.00	0.00	2,235.87	2,235.87	17,682.78	1,500.00	16,182.78
300-901T	HS VOLLEYBALL FUNDRAISER ACCT.	2,060.49	0.00	0.00	0.00	0.00	2,060.49	0.00	2,060.49
300-901U	JH VOLLEYBALL FUNDRAISER	0.00	0.00	0.00	0.00	0.00	0.00	0.00	0.00
300-901V	Panther Indoor Track Club	3,645.87	0.00	0.00	0.00	0.00	3,645.87	0.00	3,645.87
300-901W	HS CROSS COUNTRY FUNDRAISER ACCT.	4,009.92	0.00	0.00	2,100.03	2,592.16	1,417.76	0.00	1,417.76
300-901X	JH CROSS COUNTRY FUNDRAISER ACCT.	527.90	0.00	0.00	0.00	0.00	527.90	0.00	527.90
300-901Y	BOYS TENNIS FUNDRAISER ACCT.	3,015.67	0.00	0.00	0.00	0.00	3,015.67	0.00	3,015.67
300-901Z	GIRLS TENNIS FUNDRAISER ACCT.	8,097.53	0.00	0.00	706.00	706.00	7,391.53	539.00	6,852.53
300-902B	BAND	0.00	9,450.00	9,450.00	76.59	76.59	9,373.41	0.00	9,373.41
300-903B	HIGH SCHOOL CHOIR (MUSICALS)	22,527.92	0.00	(55.47)	0.00	0.00	22,472.45	0.00	22,472.45
300-904B	JR HIGH CHEERLEADERS	11.54	0.00	0.00	0.00	0.00	11.54	0.00	11.54
300-905B	HIGH SCHOOL CHEERLEADERS	5,173.38	0.00	0.00	384.20	2,962.71	2,210.67	382.00	1,828.67
300-906B	SYB - SPRINGBORO YOUTH BASKETBALL	10,059.00	0.00	0.00	0.00	0.00	10,059.00	0.00	10,059.00
300-907B	ATH/TOURNAMENT	0.00	0.00	0.00	0.00	0.00	0.00	0.00	0.00
300-908B	HS BOYS LACROSSE	0.00	0.00	0.00	0.00	0.00	0.00	0.00	0.00
300-909B	JR HIGH SHOW CHOIR	10,225.89	1,174.50	1,174.50	0.00	0.00	11,400.39	1,214.00	10,186.39
300-910B	HS GIRLS LACROSSE	8,000.00	0.00	0.00	0.00	0.00	8,000.00	0.00	8,000.00
300-911B	H.S. SHOW CHOIR	220.61	0.00	0.00	0.00	0.00	220.61	0.00	220.61
300-913B	H.S. Acappella	647.32	0.00	0.00	0.00	0.00	647.32	0.00	647.32
300-914B	HIGH SCHOOL CHEERLEADING COMPETITIONS	2,812.32	0.00	0.00	0.00	0.00	2,812.32	0.00	2,812.32
300-915B	HIGH SCHOOL HOCKEY	17.34	0.00	0.00	0.00	0.00	17.34	0.00	17.34
300-916B	SPECIAL OLYMPICS	2,987.34	0.00	0.00	0.00	0.00	2,987.34	0.00	2,987.34
300-917B	TURF MAINTENANCE FUND	28,732.91	1,010.38	2,020.76	0.00	0.00	30,753.67	0.00	30,753.67
300-918B	JR HIGH CHEERLEADING COMPETITION	1,866.48	0.00	0.00	0.00	0.00	1,866.48	0.00	1,866.48
300-919B	FIVE POINTS ELEM. STUDENT COUNCIL	6,638.36	0.00	0.00	0.00	0.00	6,638.36	384.57	6,253.79
300-920B	DENNIS ELEMENTARY- STUDENT COUNCIL	24.16	0.00	0.00	0.00	0.00	24.16	0.00	24.16
300-9511	CAMP HS BASEBALL	0.00	0.00	0.00	0.00	0.00	0.00	0.00	0.00
300-9512	CAMP HS BOYS BASKETBALL	0.00	0.00	0.00	0.00	0.00	0.00	0.00	0.00
300-9516	CAMP HS FOOTBALL	0.00	0.00	0.00	0.00	0.00	0.00	0.00	0.00
300-9517	Boro Extra 2% Basketball Club	0.00	0.00	0.00	0.00	0.00	0.00	0.00	0.00



## SPRINGBORO COMMUNITY SCHOOLS

## Cash Summary Report

Full Account Code	Description	Initial Cash	MTD Received	FYTD Received	MTD Expended	FYTD Expended	Fund Balance	Encumbrance	Unencumbered Balance
300-9523	JH CROSS COUNTRY CAMP	\$ 0.00	\$ 0.00	\$ 0.00	\$ 0.00	\$ 0.00	\$ 0.00	\$ 0.00	\$ 0.00
300-9526	CAMP HS TENNIS	0.00	0.00	0.00	0.00	0.00	0.00	0.00	0.00
300-9532	CAMP HS GIRLS BASKETBALL	0.00	0.00	0.00	0.00	0.00	0.00	0.00	0.00
300-9533	CAMP GIRLS SOCCER	0.00	0.00	0.00	0.00	0.00	0.00	0.00	0.00
300-9535	CAMP HS VOLLEYBALL	0.00	0.00	0.00	0.00	0.00	0.00	0.00	0.00
451-9220	Network Connectivity Grant FY20	0.00	0.00	0.00	0.00	0.00	0.00	0.00	0.00
451-9221	Network Connectivity FY21	0.00	0.00	0.00	0.00	0.00	0.00	0.00	0.00
451-9222	Network Connectivity FY22	0.00	0.00	0.00	0.00	0.00	0.00	0.00	0.00
451-9223	Network Connectivity FY23	0.00	0.00	0.00	582.38	1,164.76	(1,164.76)	5,867.24	(7,032.00)
461-9220	HSTW FY20	0.00	0.00	0.00	0.00	0.00	0.00	0.00	0.00
461-9221	HSTW FY21	0.00	0.00	0.00	0.00	0.00	0.00	0.00	0.00
461-9222	HSTW FY22	0.00	0.00	0.00	0.00	0.00	0.00	0.00	0.00
461-9223	HSTW FY23	0.00	0.00	0.00	0.00	0.00	0.00	1,190.00	(1,190.00)
467-9220	Student Wellness and Success Fund FY20	0.00	0.00	0.00	0.00	0.00	0.00	0.00	0.00
467-9221	Student Wellness and Success Fund FY21	0.00	0.00	0.00	0.00	0.00	0.00	0.00	0.00
467-9222	Student Wellness and Success Funds FY22	0.00	0.00	0.00	0.00	0.00	0.00	0.00	0.00
499-9020	School Safety Grant FY21	0.00	0.00	0.00	0.00	0.00	0.00	0.00	0.00
499-9023	BWC Grant FY23	15,000.00	0.00	0.00	0.00	0.00	15,000.00	15,000.00	0.00
499-9220	BWC Safety Grant FY20	0.00	0.00	0.00	0.00	0.00	0.00	0.00	0.00
499-9221	School Bus Purchase Grant FY21	0.00	0.00	0.00	0.00	0.00	0.00	0.00	0.00
499-9222	School Bus Grant FY22-FY23	0.00	0.00	0.00	0.00	0.00	0.00	135,000.00	(135,000.00)
507-9021	ESSER II	0.00	0.00	0.00	21,510.90	44,851.73	(44,851.73)	0.00	(44,851.73)
507-9023	ESSER ARP Additional	0.00	0.00	0.00	15,702.76	179,581.33	(179,581.33)	73,231.16	(252,812.49)
507-9221	ESSER I CARES FY21	0.00	0.00	0.00	0.00	0.00	0.00	0.00	0.00
507-9222	ARP ESSER III	0.00	0.00	0.00	0.00	13,218.43	(13,218.43)	0.00	(13,218.43)
507-9223	ESSER II State Award	0.00	0.00	0.00	218,314.29	409,325.98	(409,325.98)	563,108.65	(972,434.63)
510-9021	County CARES Funds	0.00	0.00	0.00	0.00	0.00	0.00	0.00	0.00
510-9121	Township CARES Funds FY21	0.00	0.00	0.00	0.00	0.00	0.00	0.00	0.00
510-9221	CARES CRF Suburban Grant FY21	0.00	0.00	0.00	0.00	0.00	0.00	0.00	0.00
510-9321	City CARES Funds FY21	0.00	0.00	0.00	0.00	0.00	0.00	0.00	0.00
516-9019	IDEA B Restoration Funds	0.00	0.00	0.00	0.00	0.00	0.00	0.00	0.00
516-9020	FY20 Restoration Funds	0.00	0.00	0.00	0.00	0.00	0.00	0.00	0.00
516-9022	ARP IDEA	0.00	0.00	0.00	9,841.25	18,911.77	(18,911.77)	2,601.76	(21,513.53)
516-9219	IDEA-B FY19	0.00	0.00	0.00	0.00	0.00	0.00	0.00	0.00
516-9220	Part B FY20	0.00	0.00	0.00	0.00	0.00	0.00	0.00	0.00
516-9221	IDEA B FY21	0.00	0.00	0.00	0.00	0.00	0.00	0.00	0.00
516-9222	IDEA - B FY22	0.00	0.00	0.00	100,786.67	187,766.27	(187,766.27)	0.00	(187,766.27)
516-9223	IDEA - B FY23	0.00	0.00	0.00	3,200.17	3,243.12	(3,243.12)	25,506.29	(28,749.41)

## SPRINGBORO COMMUNITY SCHOOLS

### Cash Summary Report

Full Account Code	Description	Initial Cash	MTD Received	FYTD Received	MTD Expended	FYTD Expended	Fund Balance	Encumbrance	Unencumbered Balance
551-9020	Title III Consortium Funds - BCESC	\$ 0.00	\$ 0.00	\$ 0.00	\$ 0.00	\$ 0.00	\$ 0.00	\$ 0.00	\$ 0.00
551-9021	Title III - BCESC Consortium	0.00	0.00	0.00	0.00	0.00	0.00	0.00	0.00
551-9022	Title III - FY22 BCESC	0.00	0.00	0.00	0.00	0.00	0.00	0.00	0.00
551-9023	Title III - FY23 BCESC	0.00	0.00	0.00	0.00	0.00	0.00	3,595.00	(3,595.00)
572-9021	Expanding Opportunities for Children FY21	0.00	0.00	0.00	0.00	0.00	0.00	0.00	0.00
572-9022	FY22 Expanding Opp for Children	0.00	0.00	0.00	0.00	0.00	0.00	0.00	0.00
572-9023	FY23 Expanding Opp for Children	0.00	0.00	0.00	0.00	0.00	0.00	0.00	0.00
572-9219	TITLE I FY19	0.00	0.00	0.00	0.00	0.00	0.00	0.00	0.00
572-9220	Title I FY20	0.00	0.00	0.00	0.00	0.00	0.00	0.00	0.00
572-9221	Title I FY21	0.00	0.00	0.00	0.00	0.00	0.00	0.00	0.00
572-9222	Title I FY22	0.00	0.00	0.00	0.00	1,999.06	(1,999.06)	0.00	(1,999.06)
572-9223	Title I FY23	0.00	0.00	0.00	0.00	2,949.00	(2,949.00)	0.00	(2,949.00)
584-9222	Title IV-A Student Support	0.00	0.00	0.00	0.00	0.00	0.00	0.00	0.00
584-9223	Title IV-A Student Support	0.00	0.00	0.00	4,909.09	4,909.09	(4,909.09)	4,769.65	(9,678.74)
587-9019	IDEA Pre-School Restoration Funds	0.00	0.00	0.00	0.00	0.00	0.00	0.00	0.00
587-9020	Pre-School Restoration FY20	0.00	0.00	0.00	0.00	0.00	0.00	0.00	0.00
587-9022	ARP IDEA PRESCHOOL	0.00	0.00	0.00	0.00	0.00	0.00	0.00	0.00
587-9219	PRE-SCHOOL SPEC ED	0.00	0.00	0.00	0.00	0.00	0.00	0.00	0.00
587-9220	Pre-School Special Ed FY20	0.00	0.00	0.00	0.00	0.00	0.00	0.00	0.00
587-9221	Pre-School Special Ed FY21	0.00	0.00	0.00	0.00	0.00	0.00	0.00	0.00
587-9222	Pre-School Spec ED FY22	0.00	0.00	0.00	0.00	14.09	(14.09)	0.00	(14.09)
587-9223	Pre-School Spec ED FY23	0.00	0.00	0.00	0.00	0.00	0.00	0.00	0.00
590-9219	TITLE II-A FY19	0.00	0.00	0.00	0.00	0.00	0.00	0.00	0.00
590-9220	Title II-A ITC FY20	0.00	0.00	0.00	0.00	0.00	0.00	0.00	0.00
590-9221	Title II-A FY21	0.00	0.00	0.00	0.00	0.00	0.00	0.00	0.00
590-9222	Title II-A FY22	0.00	0.00	0.00	0.00	0.00	0.00	105.30	(105.30)
590-9223	Title II-A FY23	0.00	0.00	0.00	1,341.87	2,128.74	(2,128.74)	19,355.00	(21,483.74)
599-9021	LSTA CARES Grant - Thornberry	0.00	0.00	0.00	0.00	0.00	0.00	0.00	0.00
599-9219	Student Support & Academic Enrich FY19	0.00	0.00	0.00	0.00	0.00	0.00	0.00	0.00
599-9220	Title IV-A ESSA FY20	0.00	0.00	0.00	0.00	0.00	0.00	0.00	0.00
599-9221	Title IV-A ESSA FY21	0.00	0.00	0.00	0.00	0.00	0.00	0.00	0.00
599-9222	Title IV-A ESSA FY22	0.00	0.00	0.00	0.00	0.00	0.00	0.00	0.00
599-9223	Title IV-A ESSA FY23	0.00	0.00	0.00	0.00	0.00	0.00	0.00	0.00
<b>Grand Total</b>		<b>\$ 22,835,623.36</b>	<b>\$ 9,405,536.82</b>	<b>\$ 18,990,945.80</b>	<b>\$ 5,642,589.83</b>	<b>\$ 13,204,271.28</b>	<b>\$ 28,622,297.88</b>	<b>\$ 6,081,788.04</b>	<b>\$ 22,540,509.84</b>